

**The 2020-2021 Report of Degrees Awarded
by the University of Missouri**

Randy Sade
Senior Research Analyst

Office of Institutional Research
University of Missouri System

August 2021

UM-IR 2021, Report 1

<https://www.umsystem.edu/ums/institutional-effectiveness/ir>

The 2020-2021 Report of Degrees Awarded by the University of Missouri

This report includes graphs and tables of degrees awarded by each campus since FY 2012. The first table provides a summary of degrees by level for each campus, while the second table series gives the number of awards by the colleges of each campus. The **Department Detail Summary** table provides the number of degrees awarded by academic department. These tables also show the average number of degrees over a 3, 5, & 10-year period and the percent change in FY 2021 that is relative to the 10-year average.

Notes Regarding Use of the Report:

The official annual reporting period is from July 1 to June 30 of the following calendar year. For example, FY21 includes summer and fall graduates from 2020 and the spring graduates of 2021.

Please note the axis scale range when considering graphs. It may change from campus to campus.

Previous year's tables may differ because tables in the report have been changed from the use of running averages to 3-, 5-, and 10-year averages.

This report includes a 10-year average as related to FY 2021.

Source for this report is the printed Completions Report.

Technical Support: 1-800-394-1114 TDD: 310-241-1114

If a program moves to another school or college, the data are reported as is – that is, report history is not changed and new data are reported in the new school or college. A footnote is added, i.e., program is moving. Eventually – when there are no more degrees for the old program, the former program is hidden in the report.

Figure 1.0: Rate of Change in Total Degrees & Certificates Awarded for the University of Missouri System, since 2012

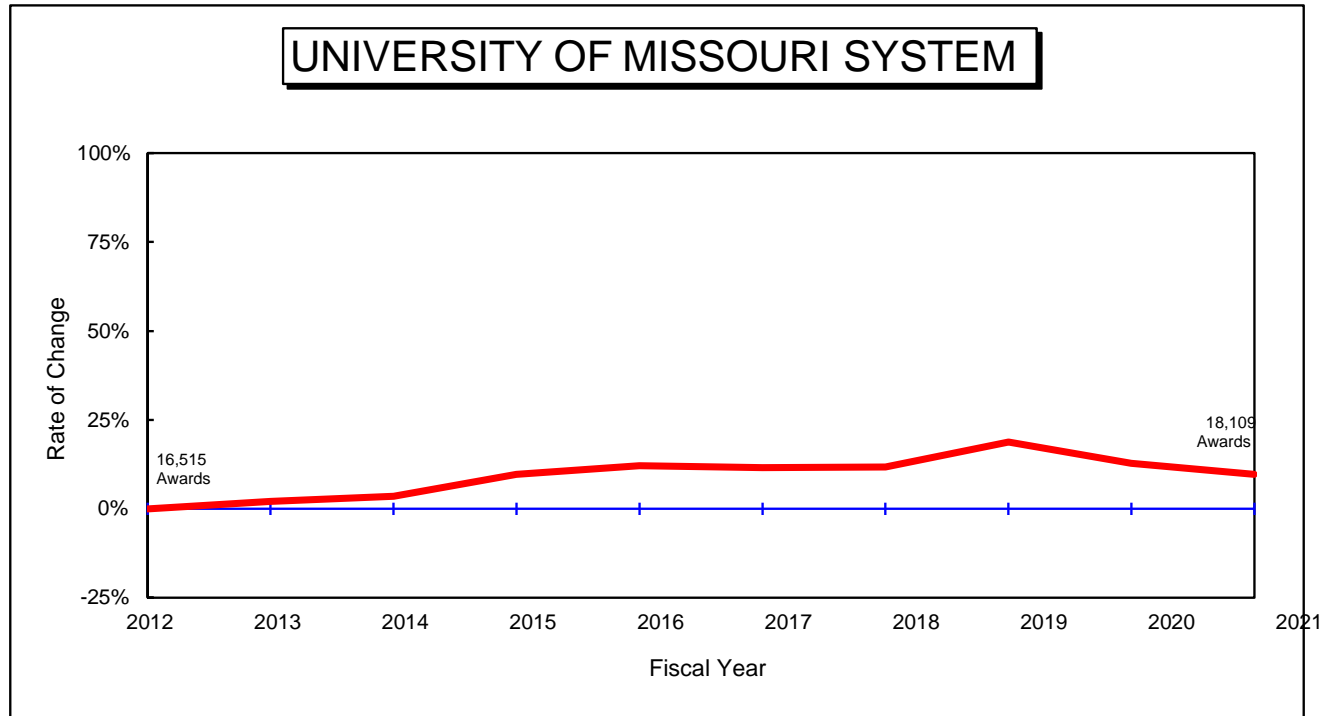


Table 1.0: Degrees and Certificates Awarded for the University of Missouri System, July 1, 2011 through June 30, 2021

DEGREE	FY	FY	FY	FY	FY	FY	FY	FY	FY	FY	Average		Change in FY21 relative to the	
	2012	2013	2014	2015	2016	2017	2018	2019	2020	2021	3-Year	5-Year	10-Year	10-Year Avg.
Undergrad. Certificate	2	2	23	55	44	56	66	1,869	1,538	1,370	1,592.3	979.8	502.5	173%
Bachelors	10,317	10,543	10,733	11,360	11,654	11,546	11,669	11,401	10,855	10,238	10,831.3	11,141.8	11,031.6	-7%
Graduate Certificate	623	781	740	780	839	869	1,047	1,026	926	1,017	989.7	977.0	864.8	18%

Figure 1.1: Rate of Change in Total Degrees & Certificates Awarded at the University of Missouri–Columbia, since 2012

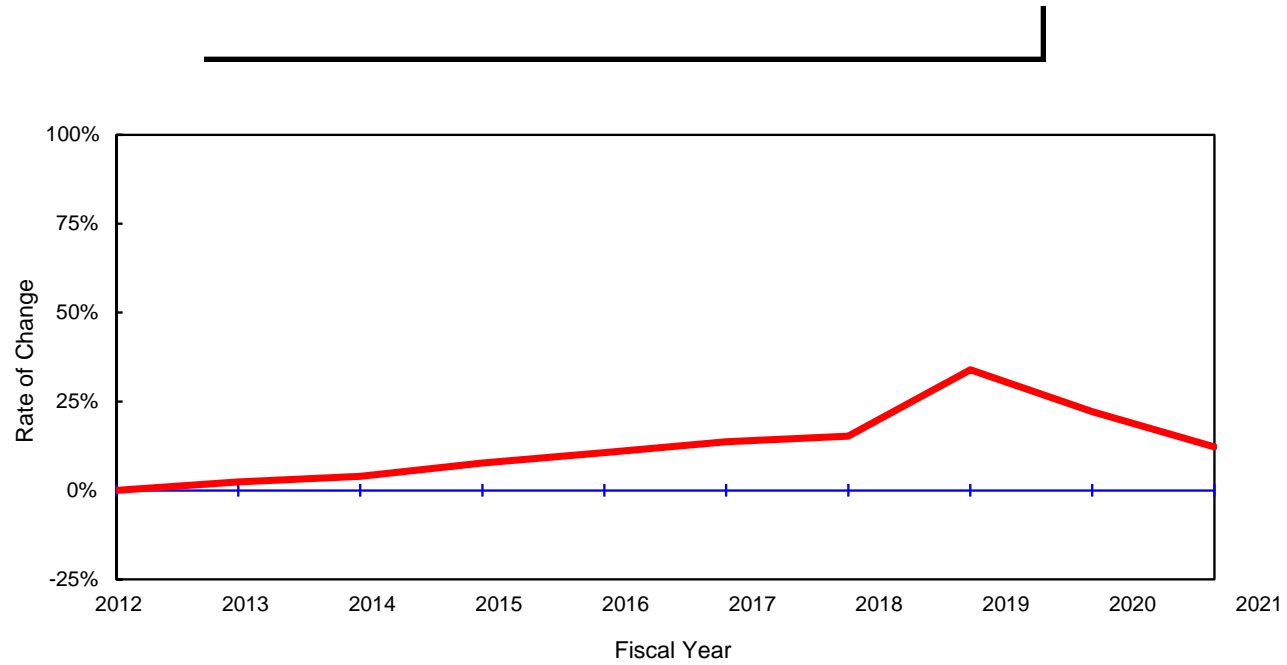


Table 1.1: Degrees and Certificates Awarded at the University of Missouri–Columbia, July 1, 2011 through June 30, 2021

Figure 1.2: Rate of Change in Total Degrees & Certificates Awarded at the University of Missouri–Kansas City, since 2012

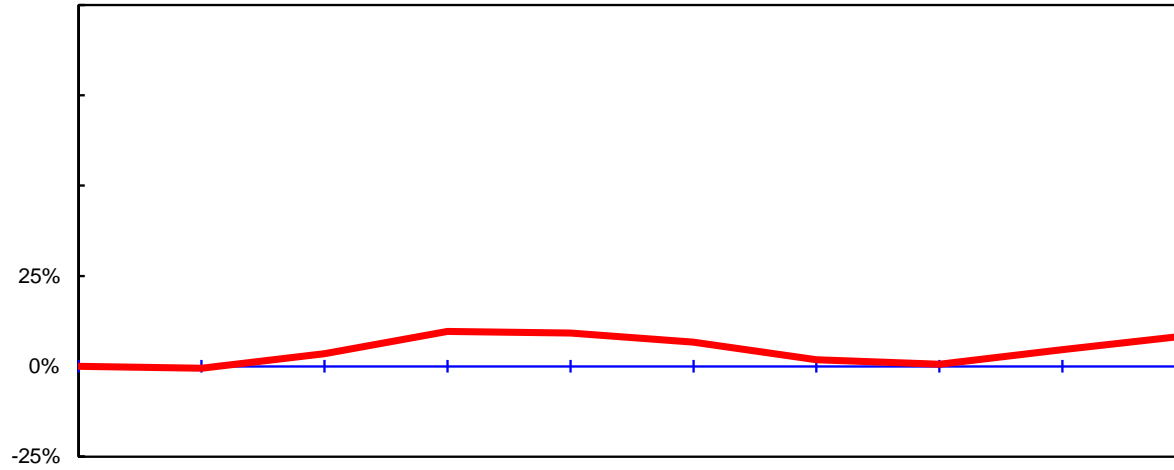


Table 1.2: Degrees and Certificates Awarded at the University of Missouri–Kansas City, July 1, 2011 through June 30, 2021

Figure 1.3: Rate of Change in Total Degrees & Certificates Awarded at the Missouri University of Science and Technology, since 2012

Table 1.3: Degrees and Certificates Awarded at the Missouri University of Science and Technology, July 1, 2011 through June 30, 2021

Figure 1.4: Rate of Change in Total Degrees & Certificates Awarded at the University of Missouri–St. Louis, since 2012

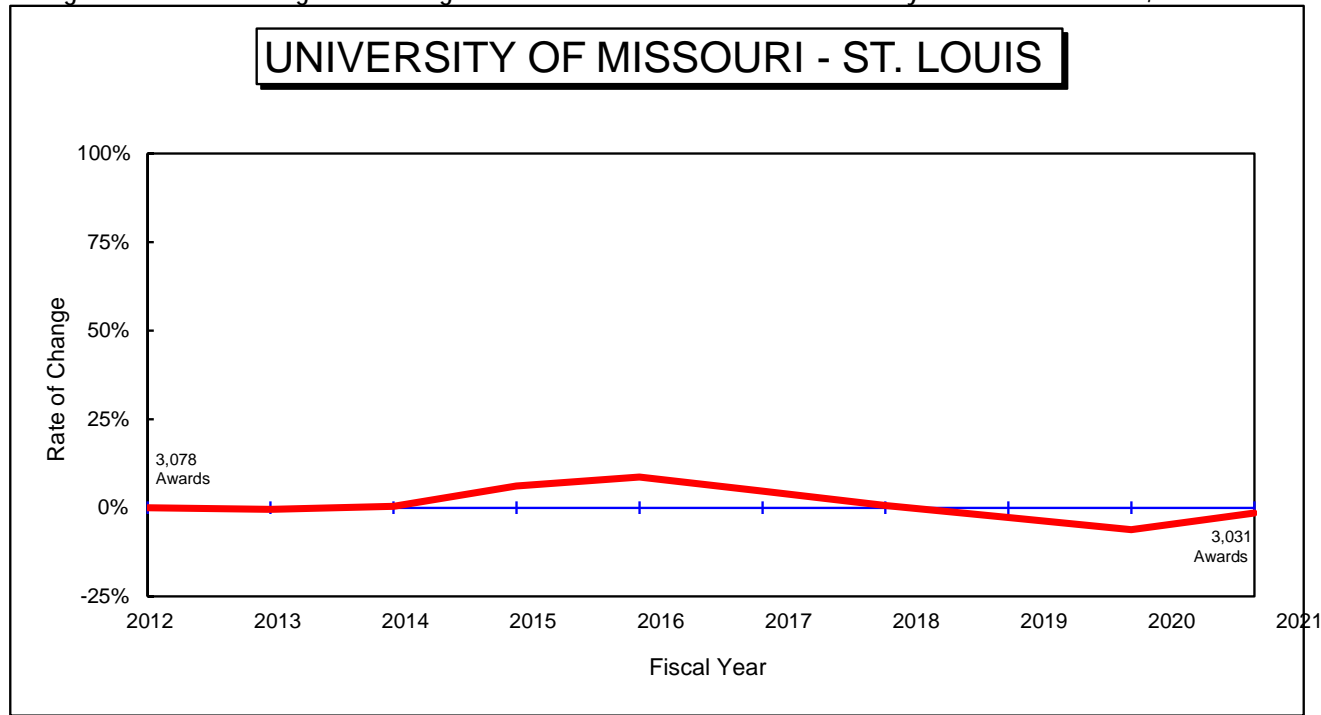


Table 1.4: Degrees and Certificates Awarded at the University of Missouri–St. Louis, July 1, 2011 through June 30, 2021

DEGREE	FY 2012	FY 2013	FY 2014	FY 2015	FY 2016	FY 2017	FY 2018	FY 2019	FY 2020	FY 2021	Average		Change in FY21 relative to the	
											3-Year	5-Year	10-Year	10-Year Avg.
Undergrad. Certificate		2	20	34	29	37	35	68	52	93	71.0	57.0	N/A	
Bachelors	1,963	1,974	2,020	2,246	2,252	2,071	1,988	1,921	1,888	1,889	1,899.3	1,951.4	2,021.2	-7%
Graduate Certificate	96	88	80	87	116	123	121	122	105	135	120.7	121.2	107.3	26%
First Professional	47	40	39	41	45	43	39	39	46	47	44.0	42.8	42.6	10%
Masters	872	871	854	761	810	826	819	728	647	719	698.0	747.8	790.7	-9%
Education Specialist	26	28	13	14	17	17	9	23	19	23	21.7	18.2	18.9	22%
Doctorate	74	61	64	84	75	106	87	92	130	125	115.7	108.0	89.8	39%
Total, All Awards	3,078	3,064	3,090	3,267	3,344	3,223	3,098	2,993	2,887	3,031	2,970.3	3,046.4	3,107.5	-2%

Figure 2.0: Rate of Change in Total Degrees Awarded, since 2012

UNIVERSITY OF MISSOURI SYSTEM

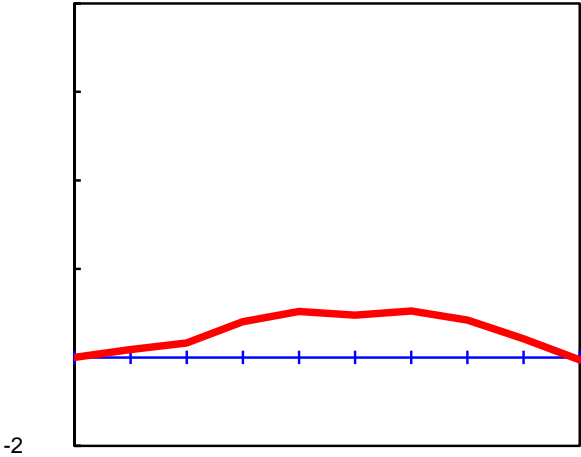


Figure 2.1: Rate of Change in Total Degrees Awarded by Campus, since 2012

UNIVERSITY OF MISSOURI-COLUMBIA

Figure 2.2: Rate of Change in Total Degrees Awarded by Campus, since 2012

UNIVERSITY OF MISSOURI-KANSAS CITY

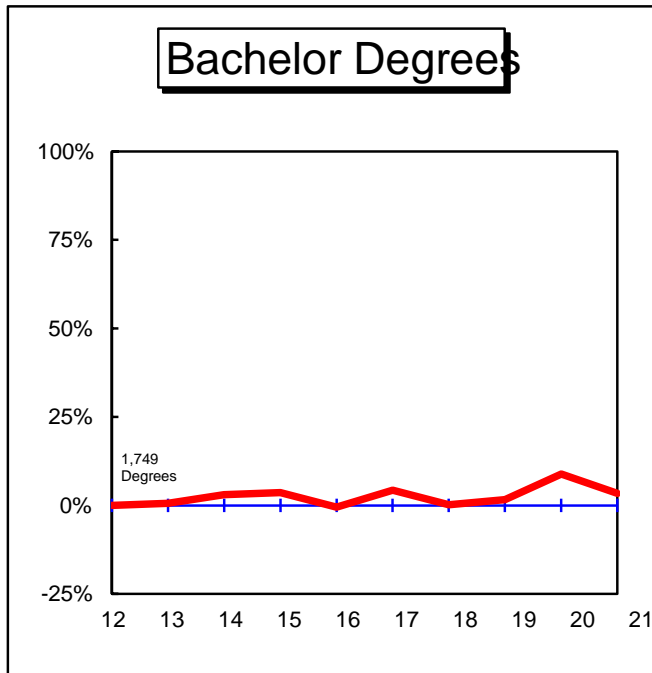


Figure 2.3: Rate of Change in Total Degrees Awarded by Campus, since 2012

MISSOURI UNIVERSITY OF SCIENCE AND TECHNOLOGY

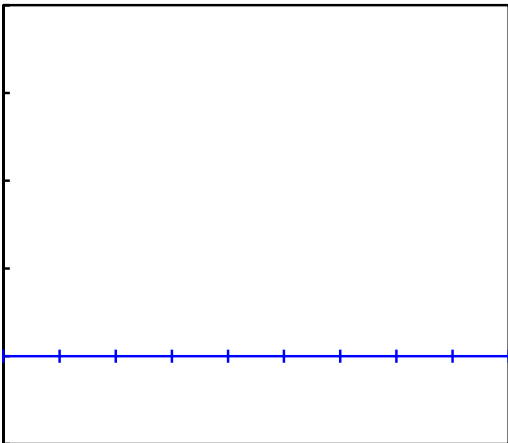


Figure 2.4: Rate of Change in Total Degrees Awarded by Campus, since 2012

UNIVERSITY OF MISSOURI-ST. LOUIS

